

valley cold pools:
a difficult-to-predict source
of hazardous weather

FOG



POLLUTION



WIND STORMS

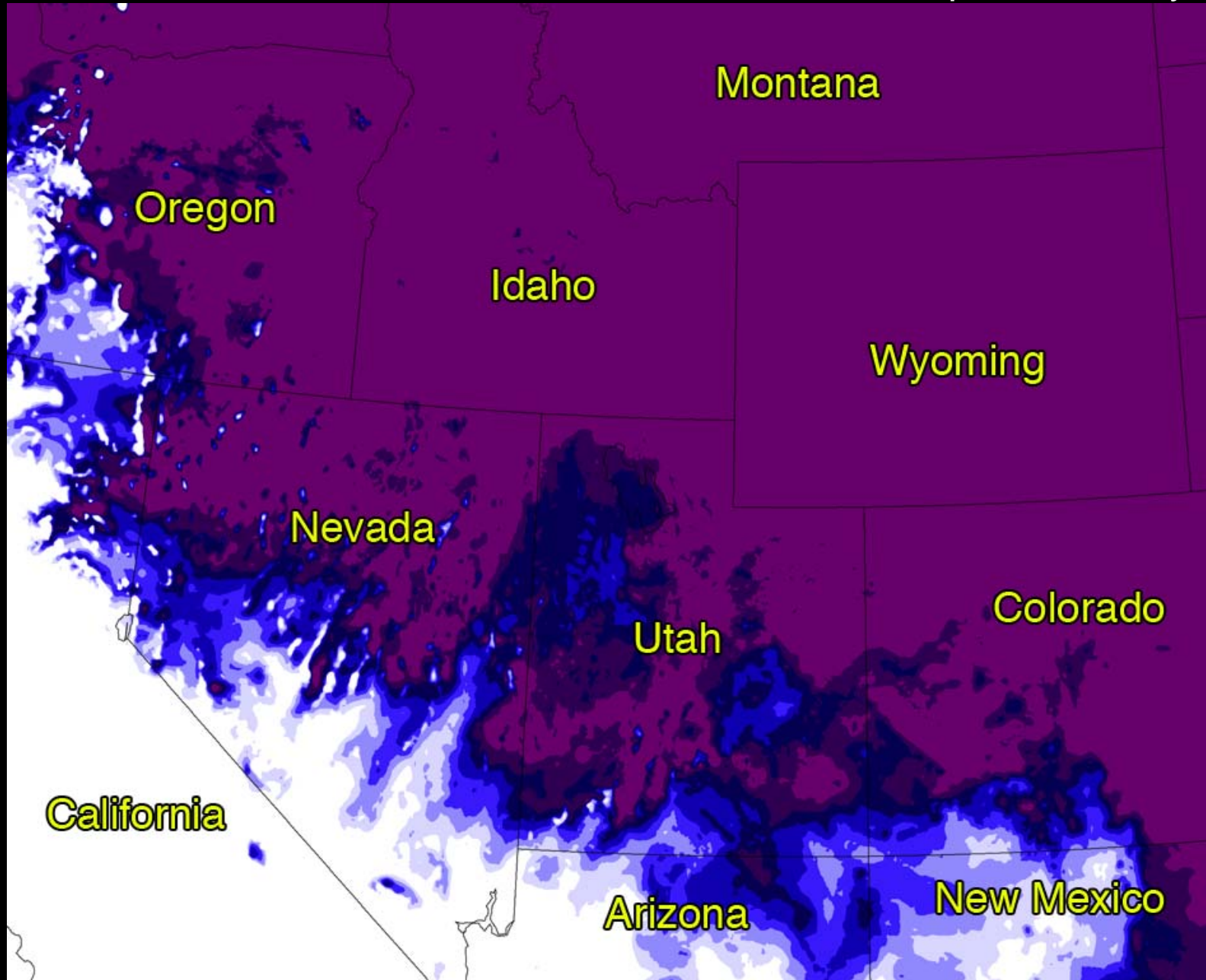


FREEZING RAIN



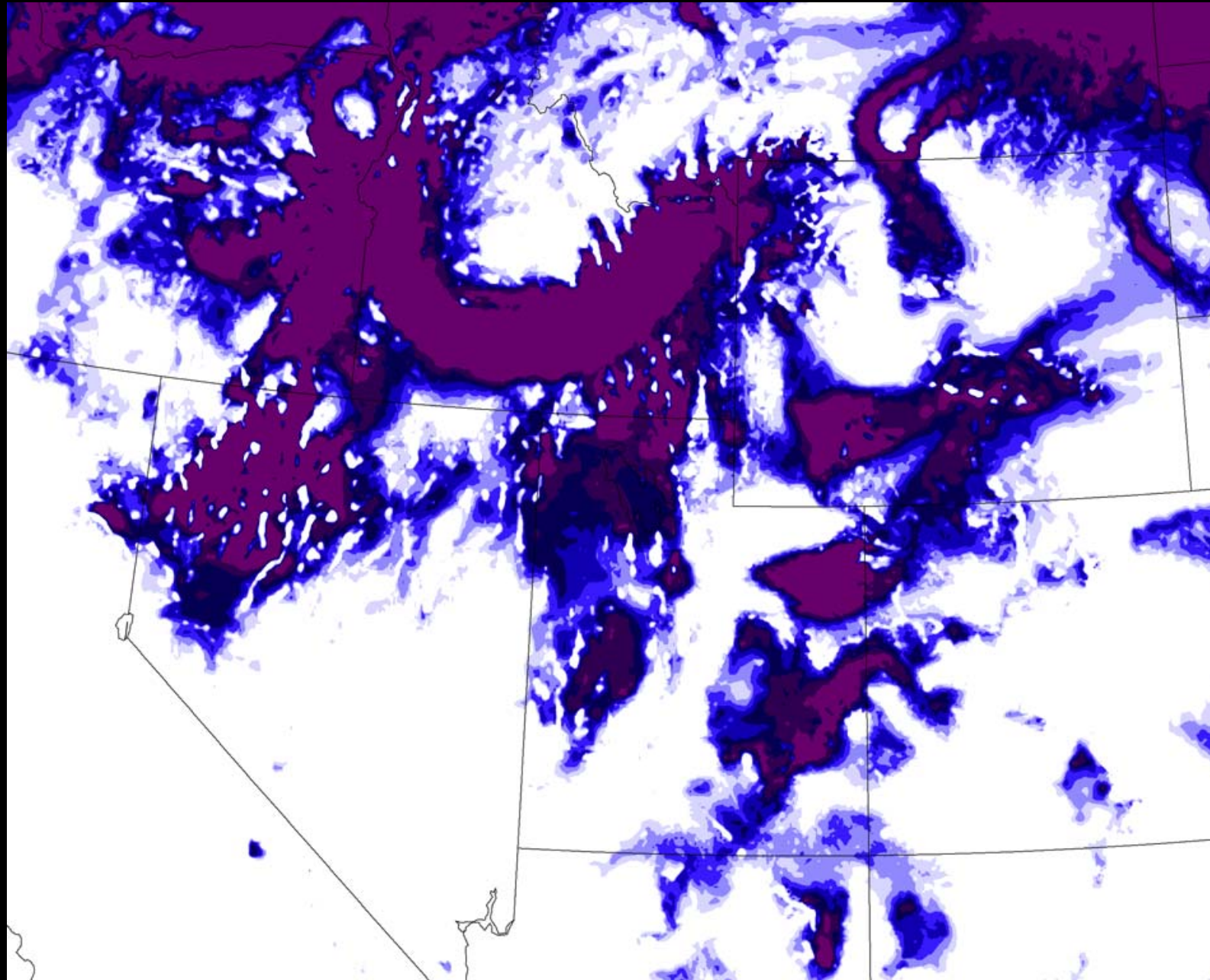
281 283 285 K

2-m temperature: day 1



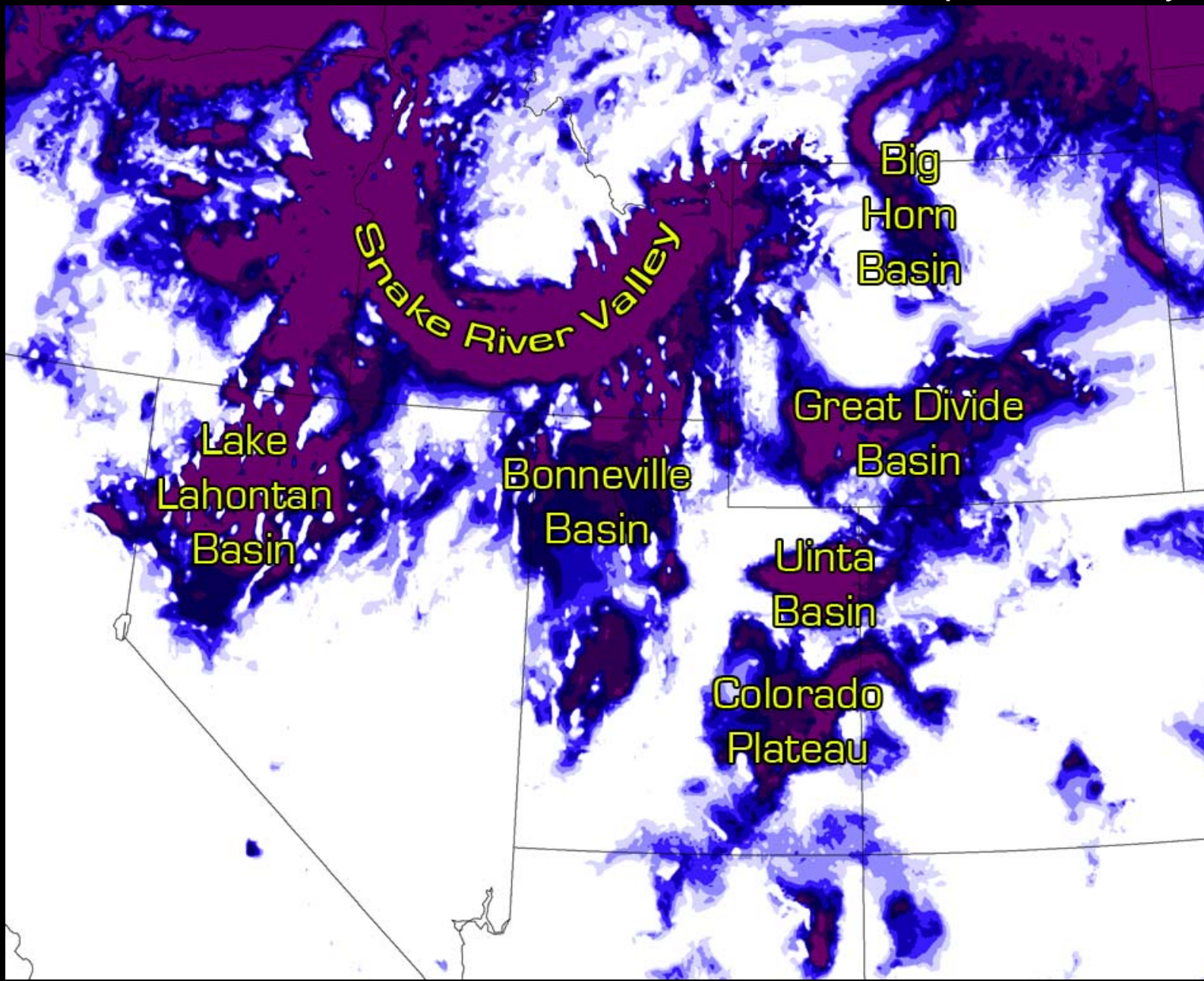
281 283 285 K

2-m temperature: day 3



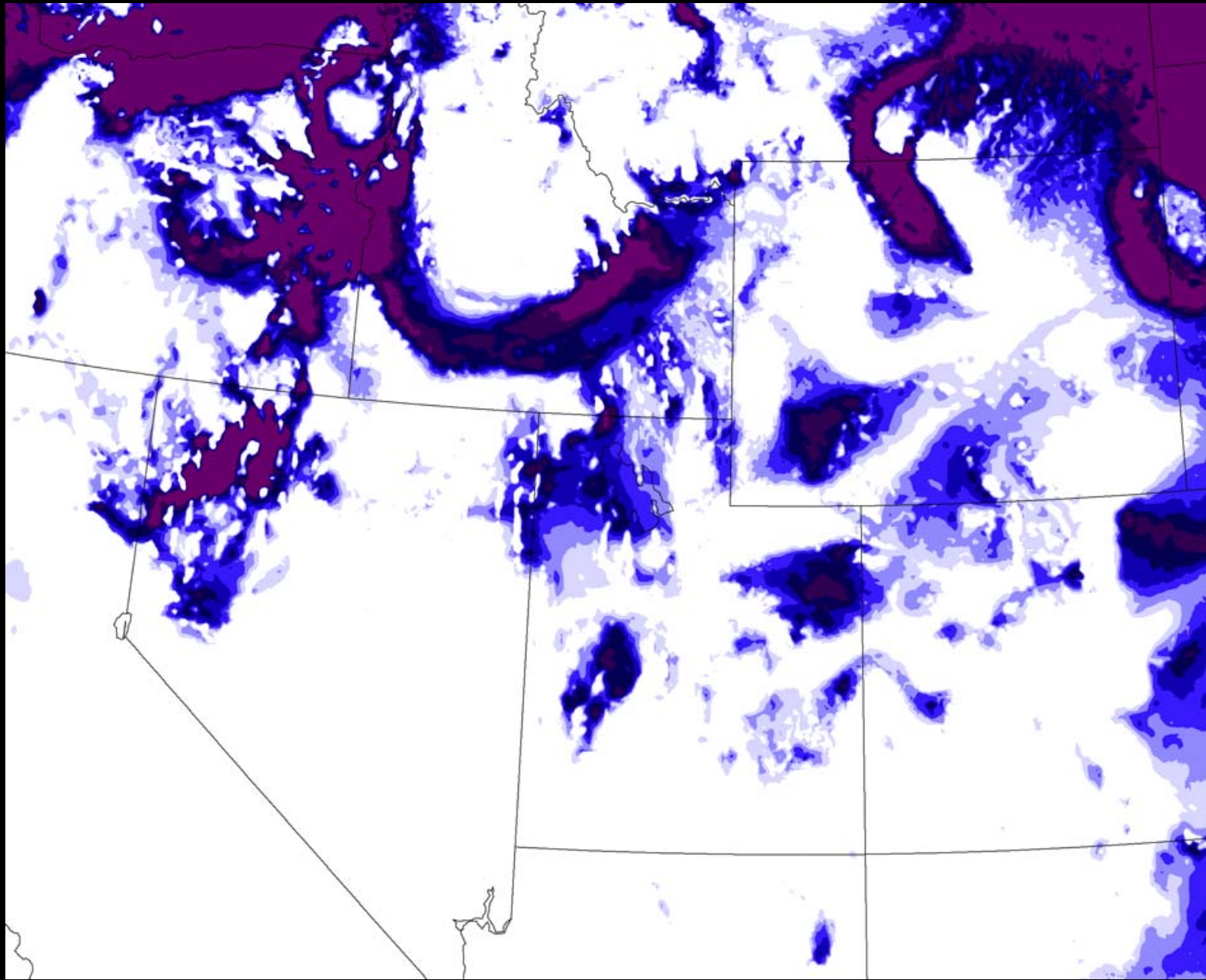
281 283 285 K

2-m temperature: day 3



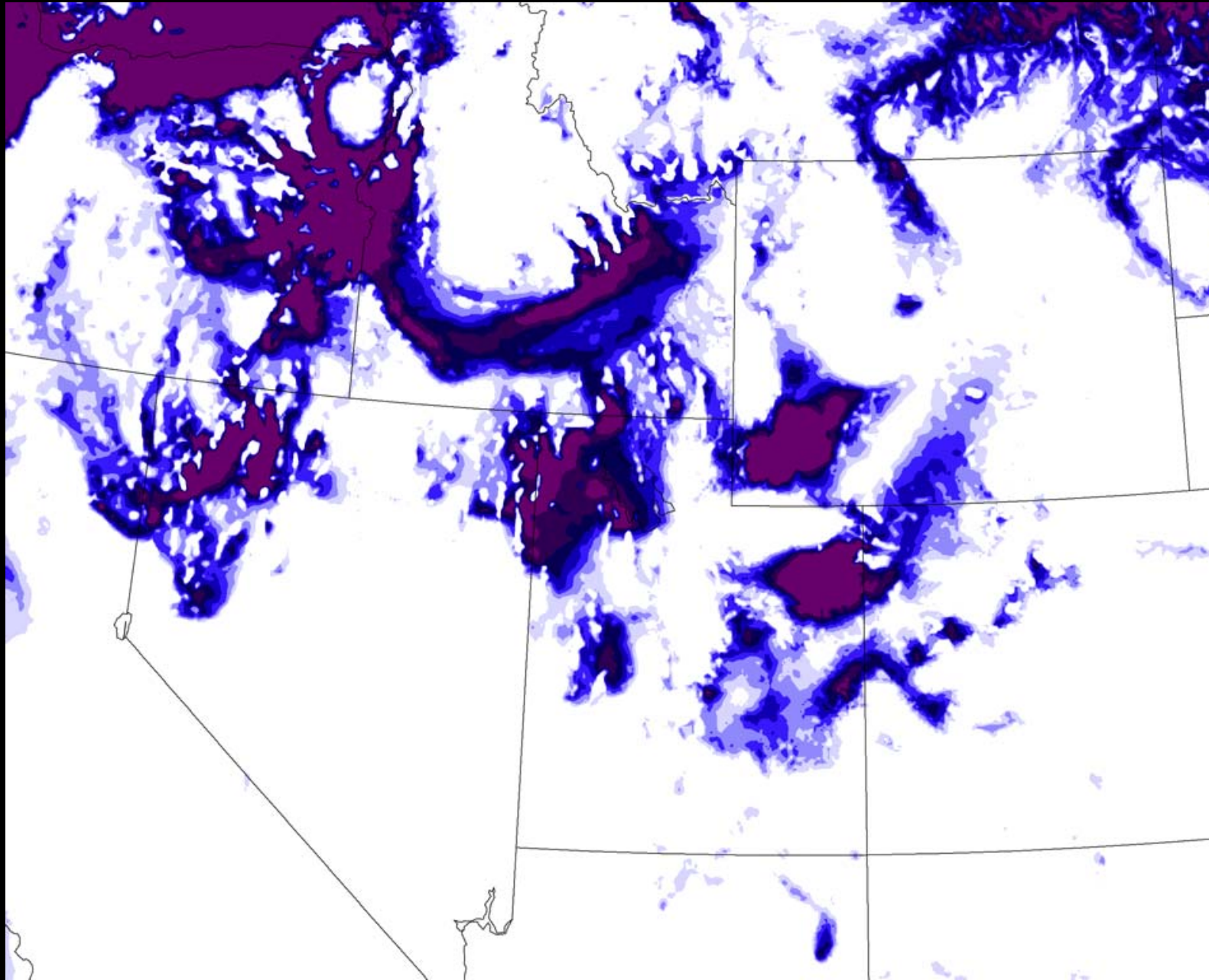
281 283 285 K

2-m temperature: day 5



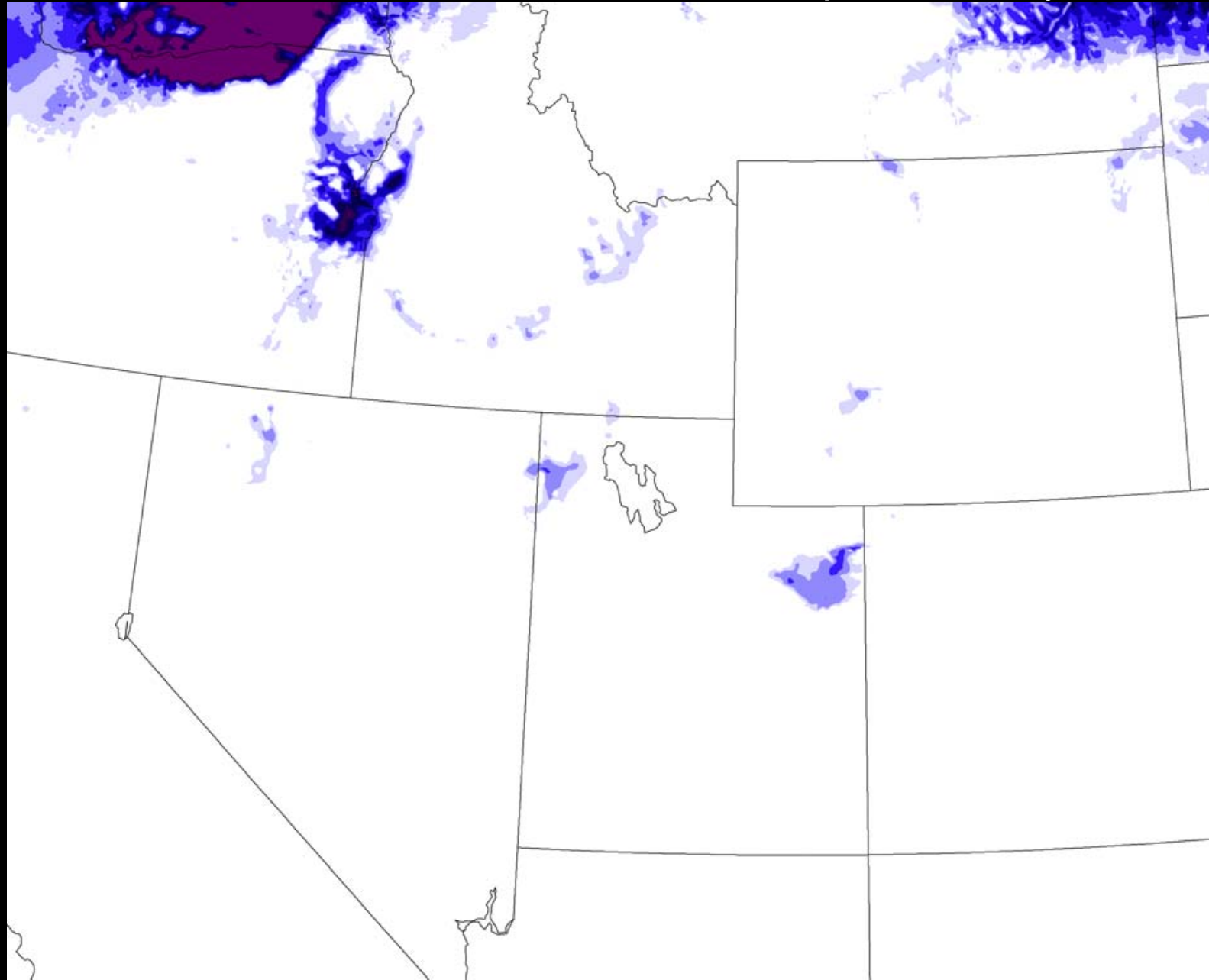
281 283 285 K

2-m temperature: day 7

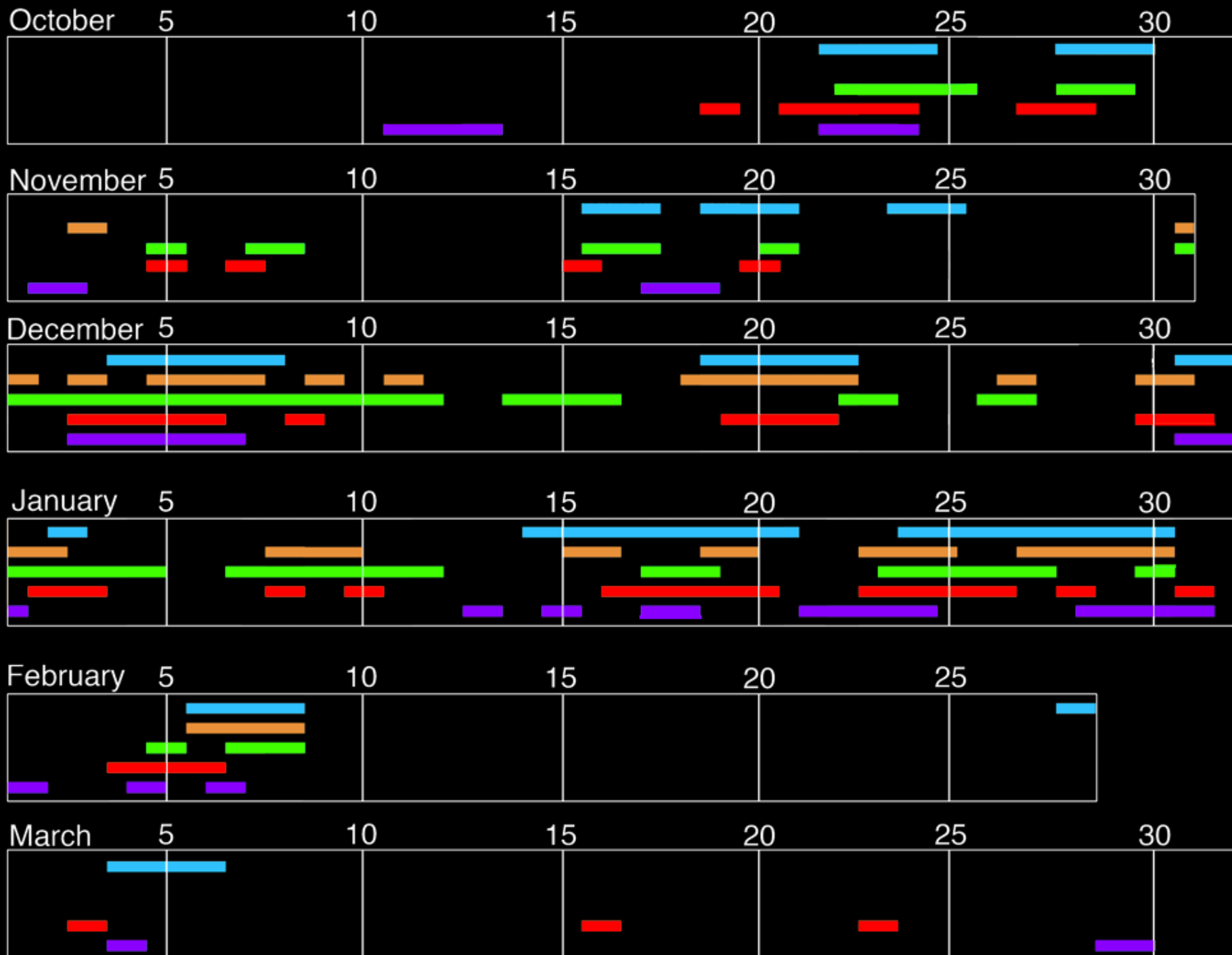


281 283 285 K

2-m temperature: day 7 + 12 h



persistent valley cold pools: 2006/07



persistent valley cold pools: 2006/07

