

# Thunderstorm Electrification and Lightning Simulation

Edward “Ted” Mansell  
NSSL/WRDD



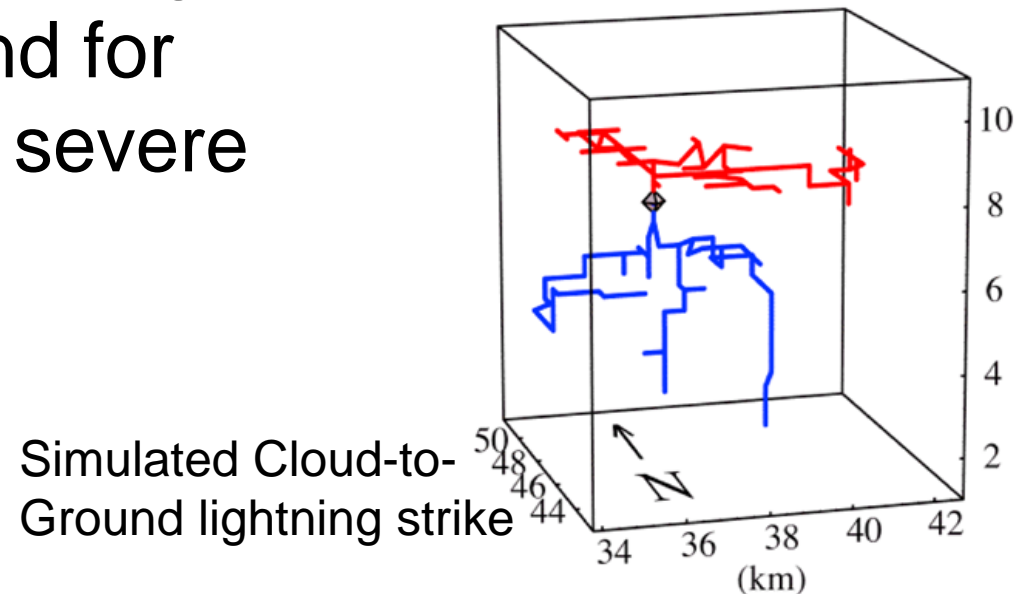
# Lightning at NSSL

NSSL is a leader in both observation and numerical simulation of thunderstorm electrification and lightning.

Growing interest in using lightning in forecast data assimilation and for nowcasting (e.g., identifying severe potential, cell tracking).

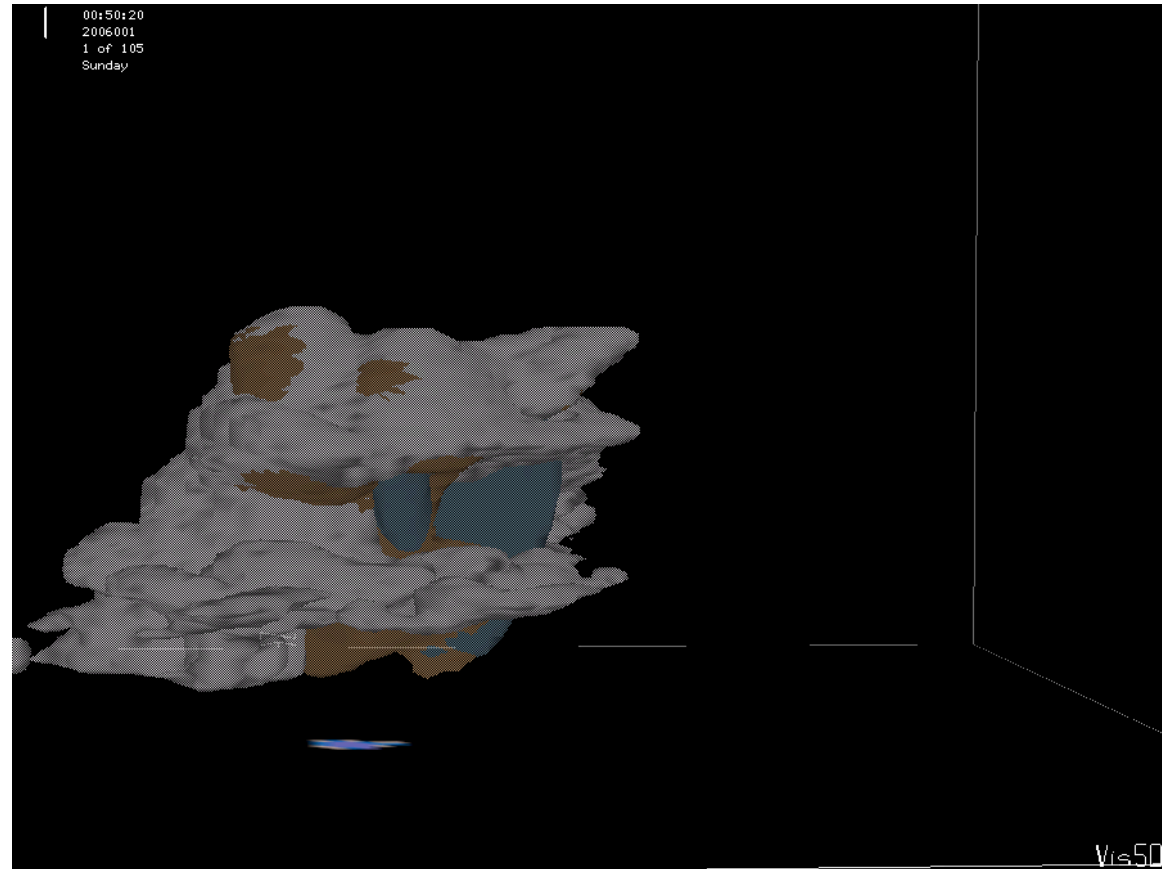


Balloon launch of field meter



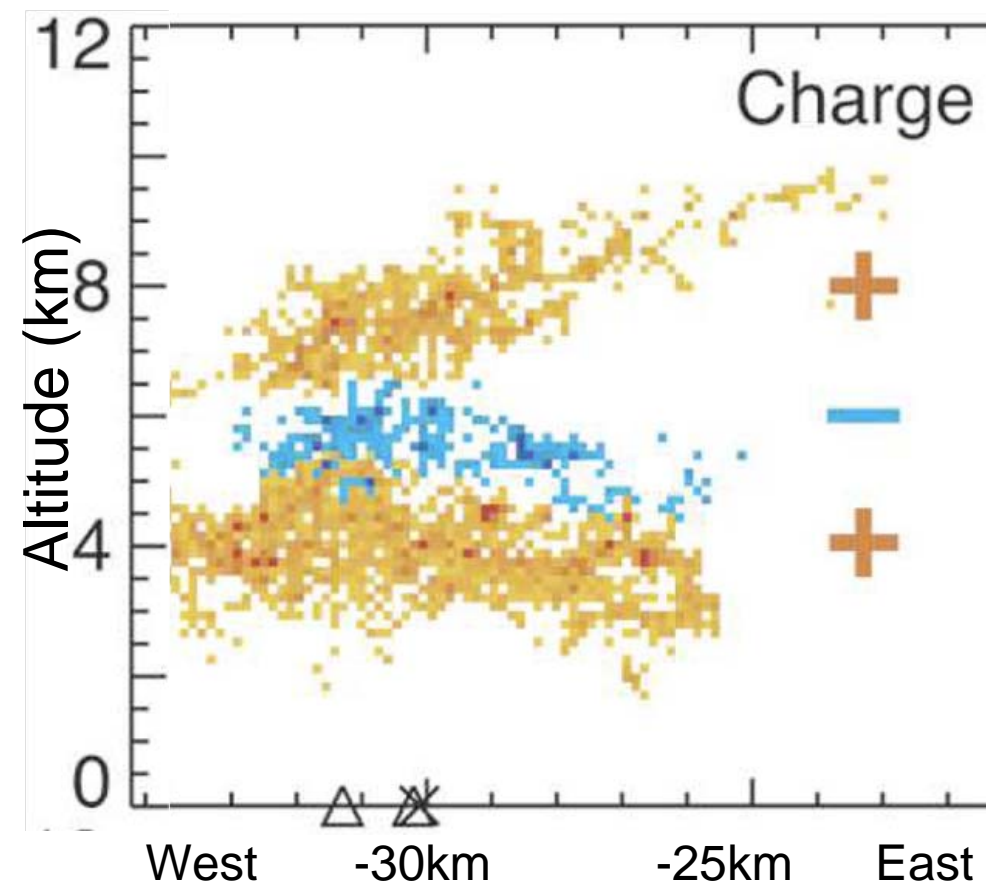
# NSSL Numerical Modeling

The NSSL storm-scale model is a unique tool due to enhancements by NSSL scientists: Research in dynamics, microphysics, electrification, and data assimilation.

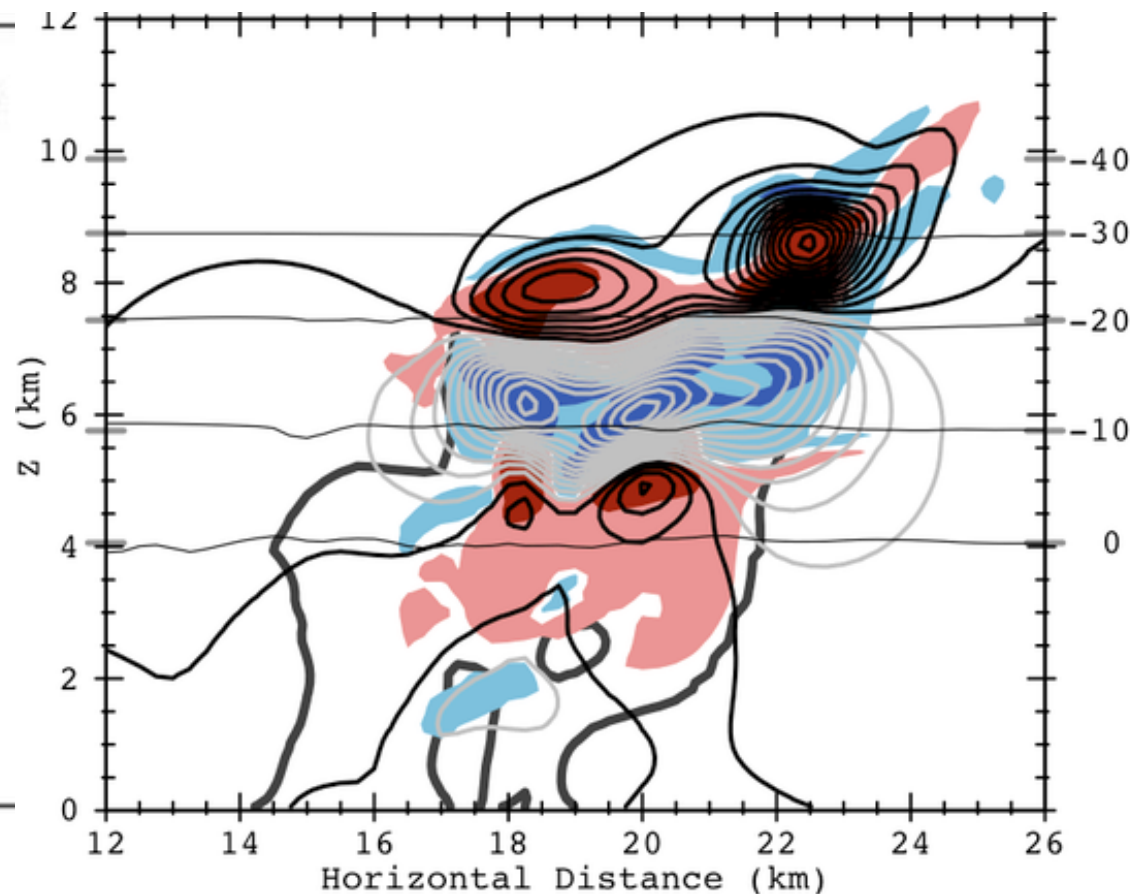




# Lightning and Charge Structure



Inferred charge structure from lightning observation



Model-simulated charge structure and lightning



# Lightning correlations

